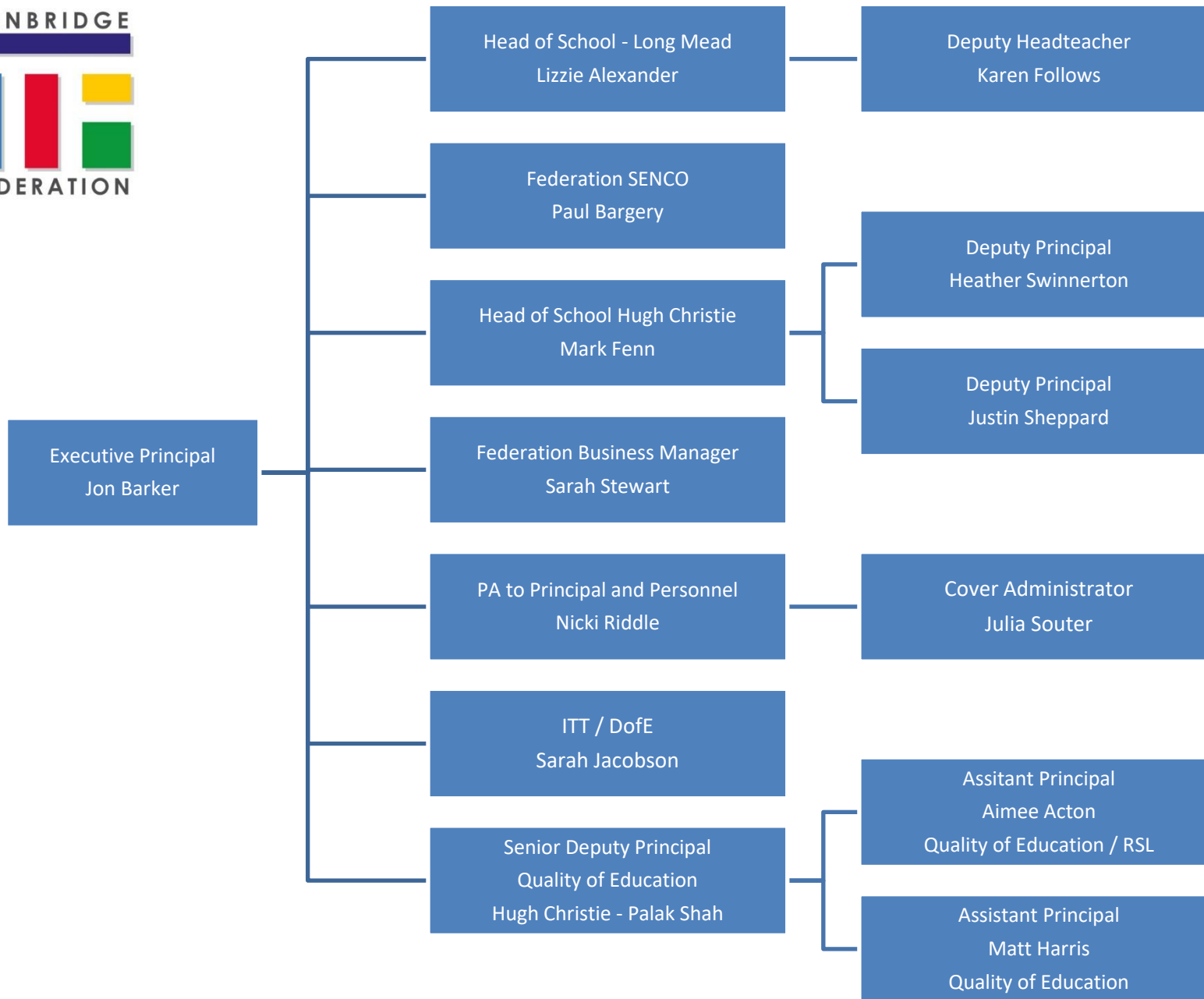
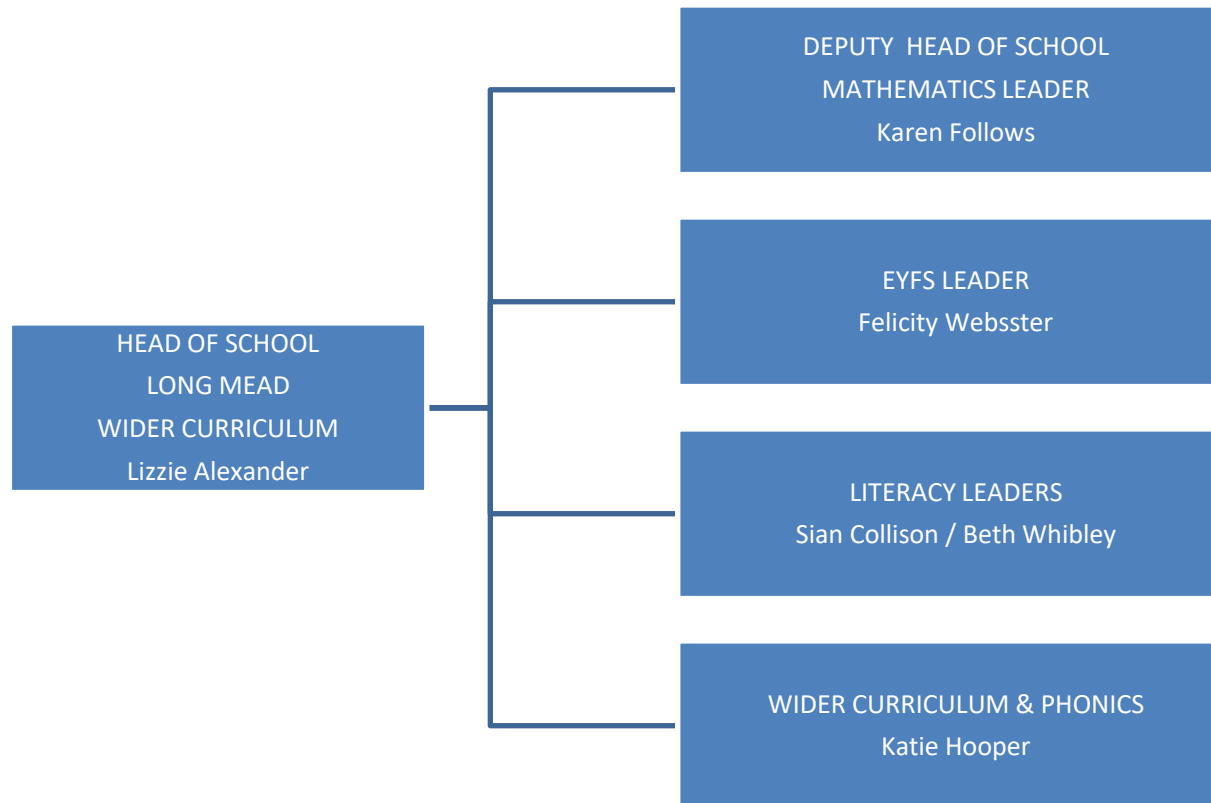


TONBRIDGE FEDERATION LEADERSHIP STRUCTURE 2021/22

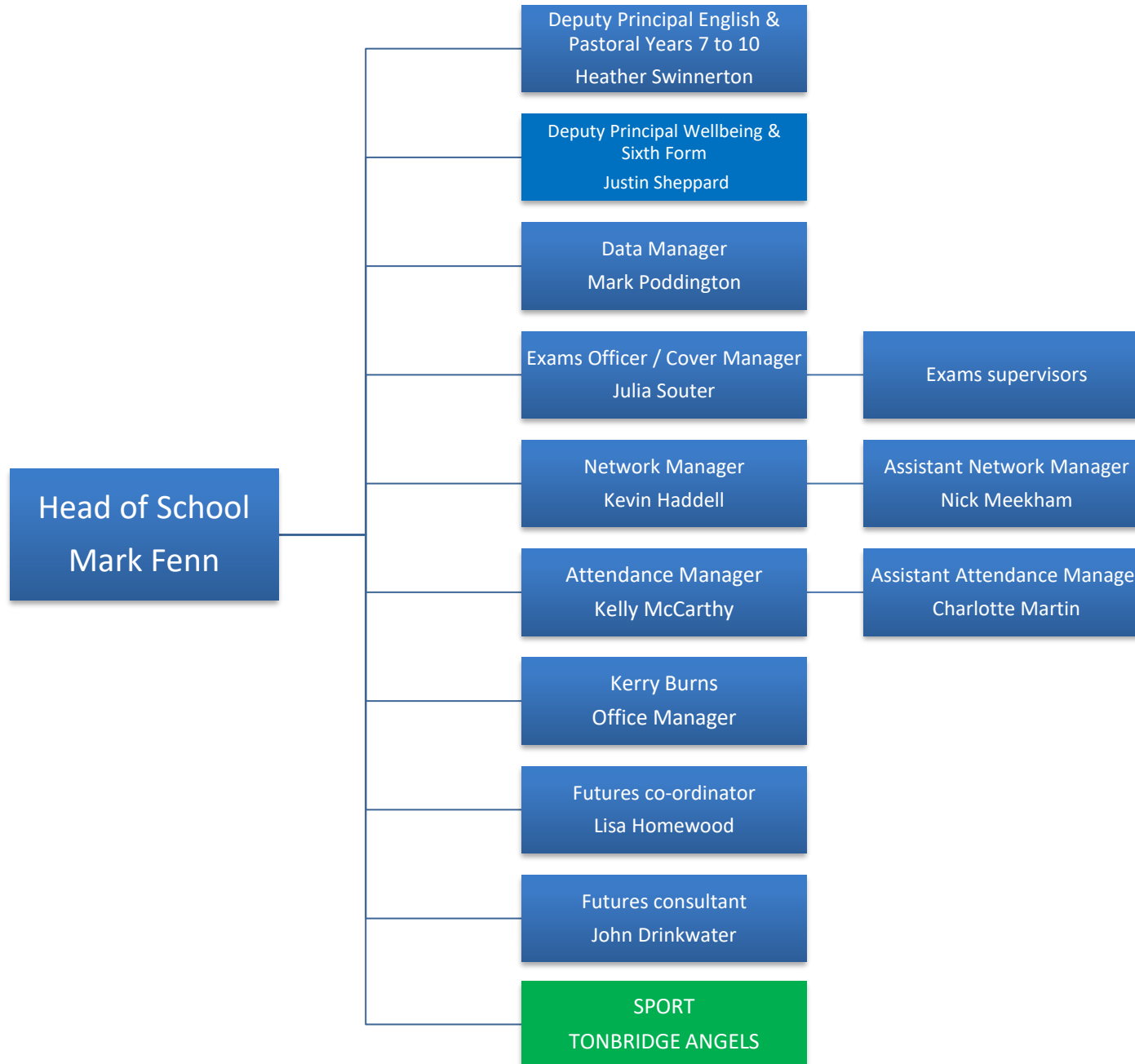




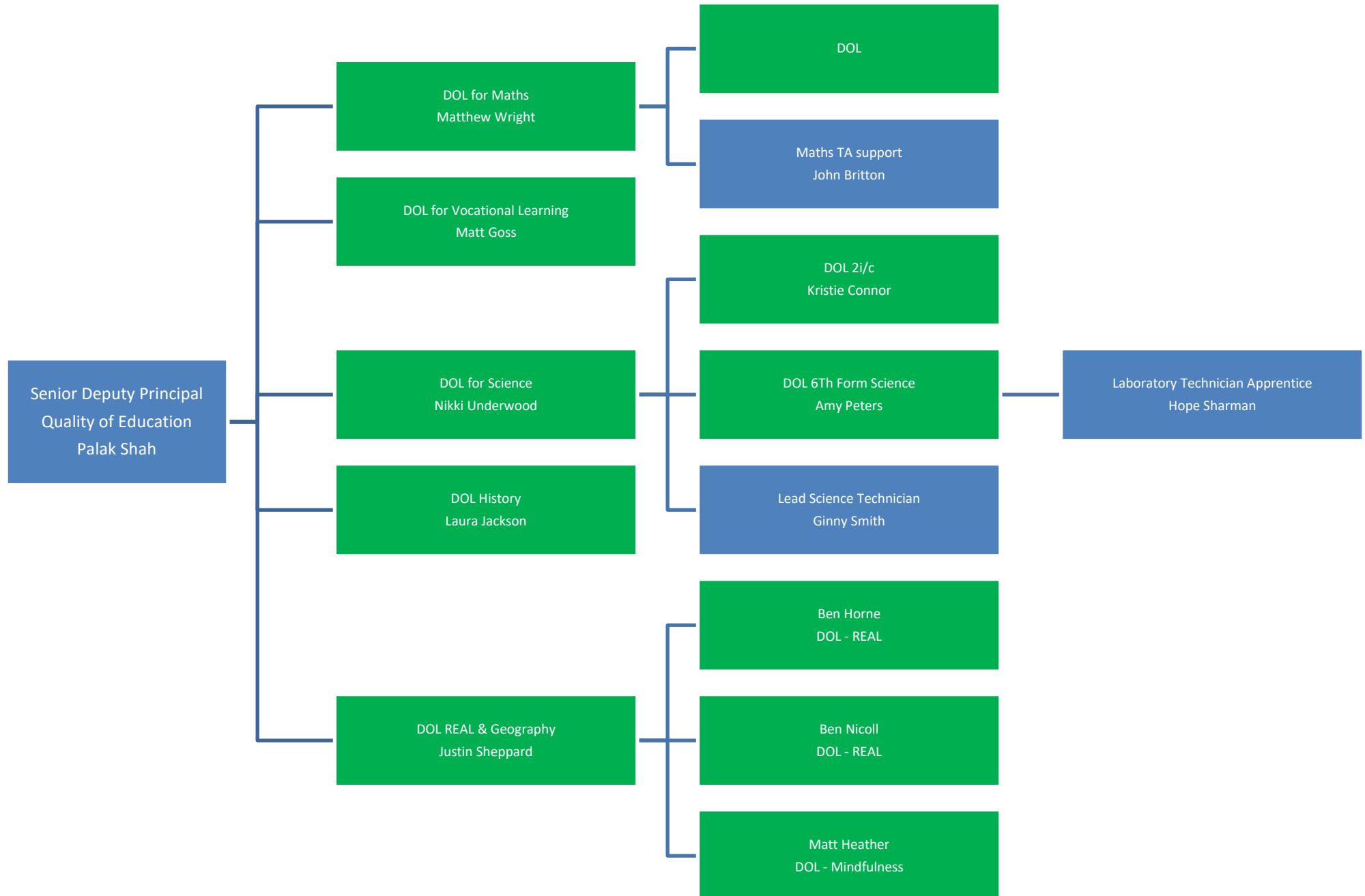
HEAD OF SCHOOL AT LONG MEAD – LIZZIE ALEXANDER

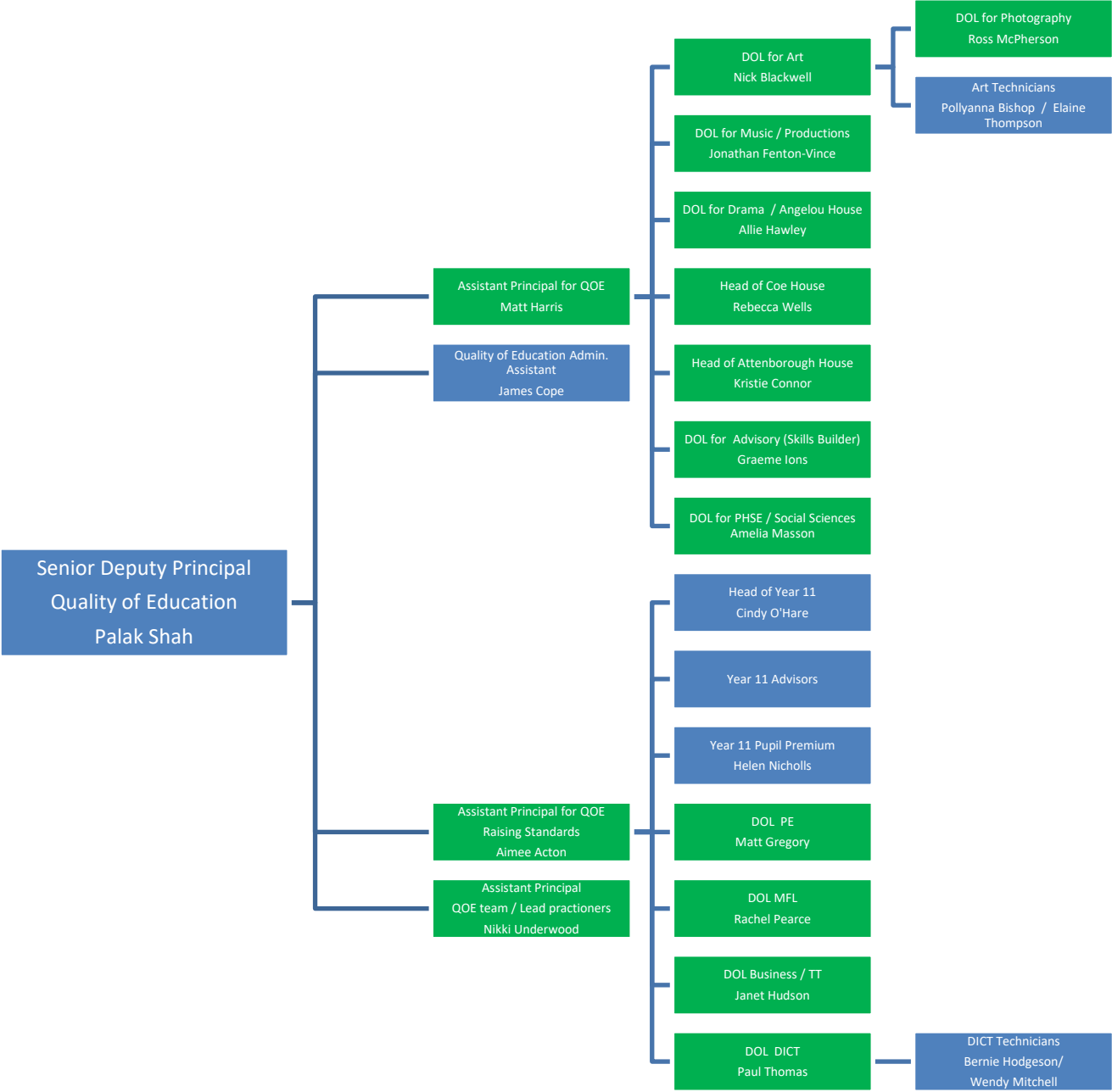


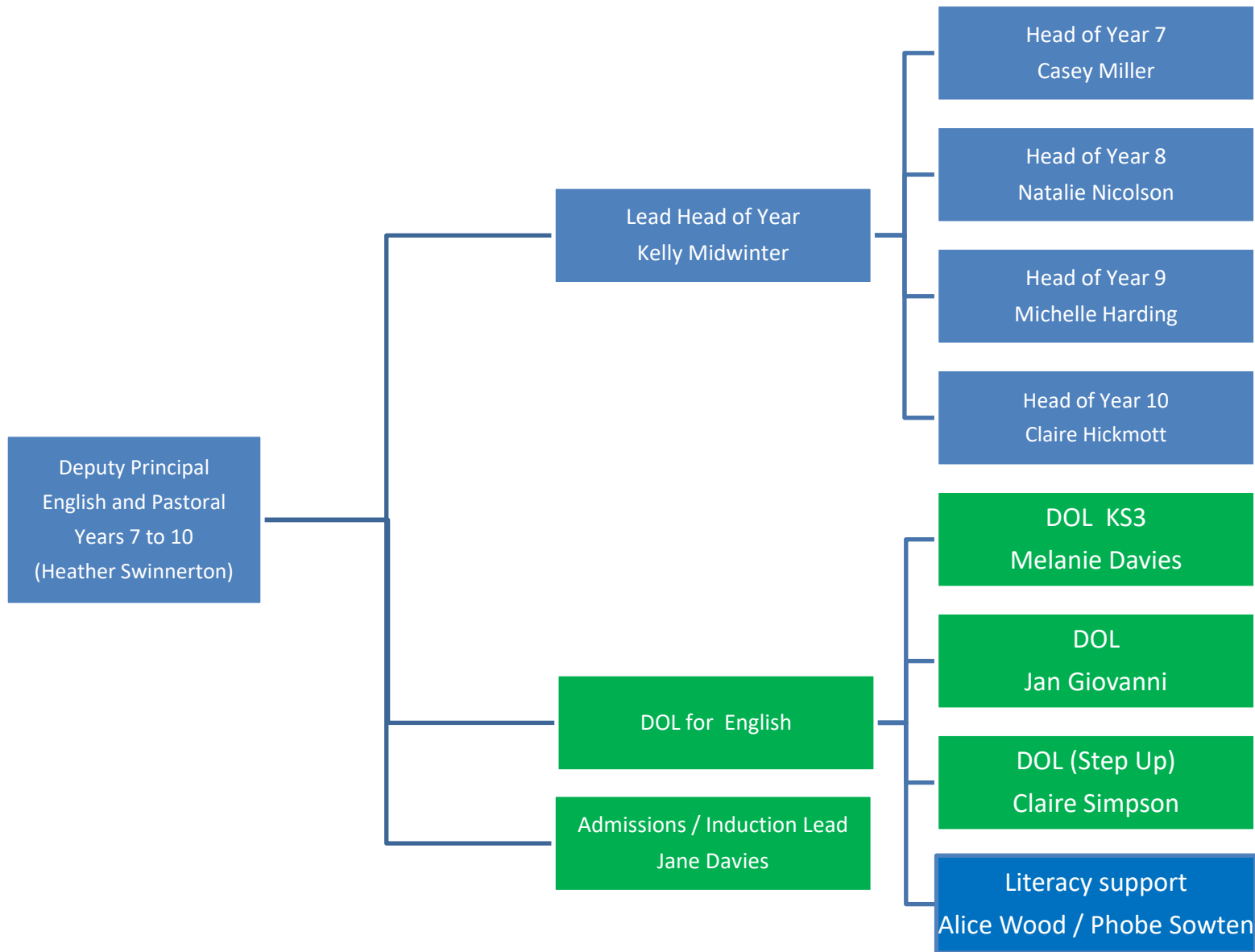
HEAD OF SCHOOL AT HUGH CHRISTIE – MARK FENN

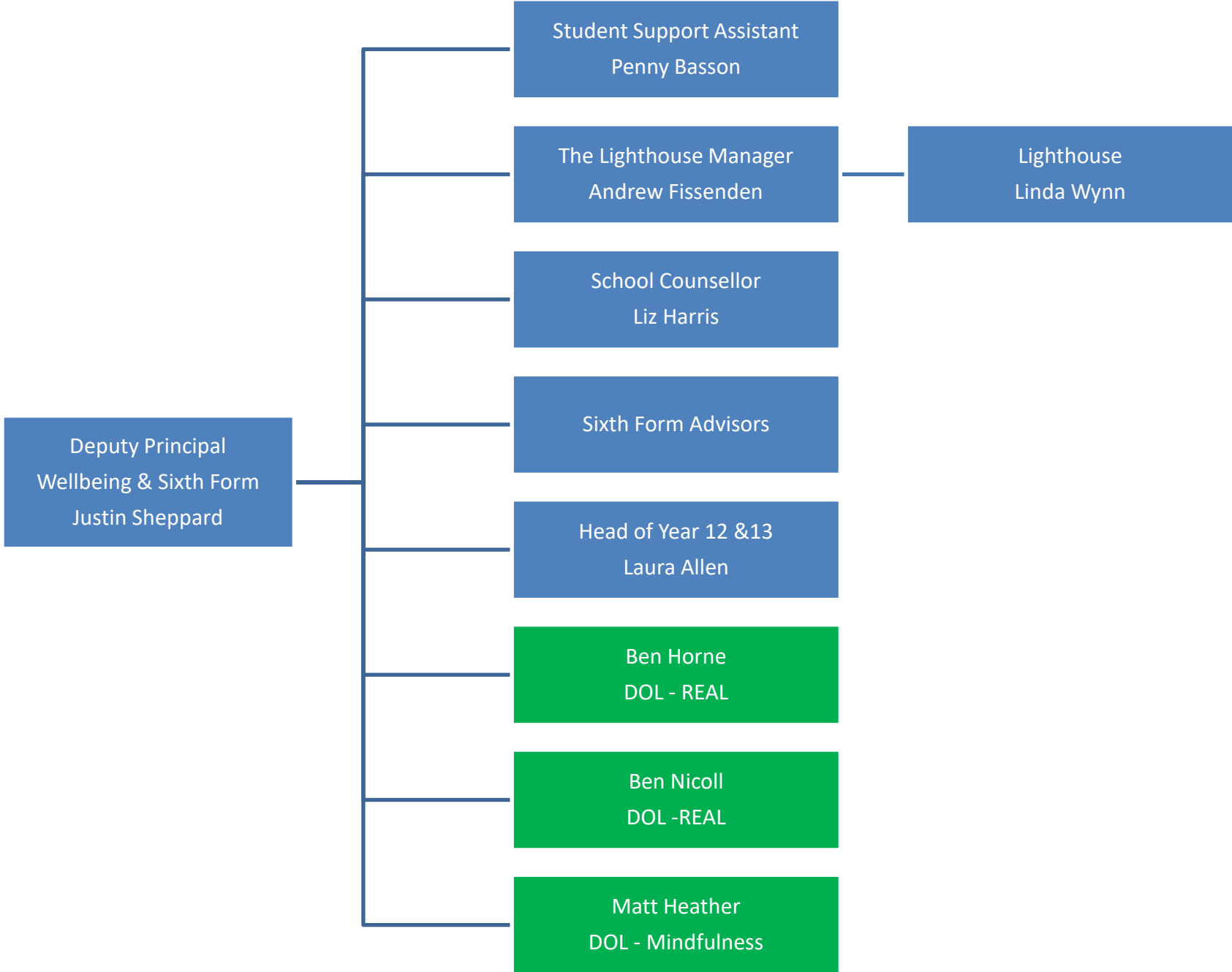


SENIOR DEPUTY PRINCIPAL AT HUGH CHRISTIE –QUALITY OF EDUCATION - PALAK SHAH (DPO)









HUGH CHRISTIE - OFFICE AND FINANCE TEAMS

Federation Business Manager
Sarah Stewart



Assistant Business Manager
Irene Santineer

Office Manager
Kerry Burns



Office Assistant
Nicole Rosier

Receptionist
Wendy Gould

FEDERATION - LEARNING SUPPORT STRUCTURE – PAUL BARGERY (DSL)

